

**Pipestone County  
Historical Society**

113 South Hiawatha  
Pipestone, MN 56164



NON-PROFIT  
ORGANIZATION  
U.S. Postage Paid  
Pipestone, MN 56164  
Permit #002

pipctymu@iw.net  
www.pipestonecountymuseum.com



**PIPESTONE COUNTY MUSEUM  
UPCOMING CALENDAR**

May 2: Hannah Haksgaard *"Deserted  
Wives and the Homestead Act"*

6:30 p.m. Museum \$

May 4: Bill Hoskins *"The Ancient Free  
& Accepted Masons"*

1:00 p.m. Ferris Grand Block \$

May 7: Anita Gaul *"FAQs About Min-  
nesota's New State Flag and Seal"*

7:00 p.m. Museum \$

May 11: Ladies Tea; Ticketed event  
11 a.m. Ferris Grand Block \$

May 16: Coffee Talk, Susan Hoskins  
10:00 a.m. Museum

May 30: Historic Preservation Interest  
Informational Session  
6:00 p.m. Museum

June 8: St. Joseph's Cemetery Tour  
2:00 p.m. near Jasper, MN \$

June 20: Coffee Talk, Trava Olivier  
10:00 a.m. Museum

July 13: Peace Lutheran Cemetery Tour  
2:00 p.m. near Ruthton, MN \$

July 18: Coffee Talk, Noah Burris  
10:00 a.m. Museum

**District #3 Schoolhouse  
& Schoolyard Games**

Open Thursdays 12:30-3:00pm  
June, July, August

With Mrs. Diane Hansen, Teacher &  
Trava Olivier, Museum Educator

# The Prairie Traveler

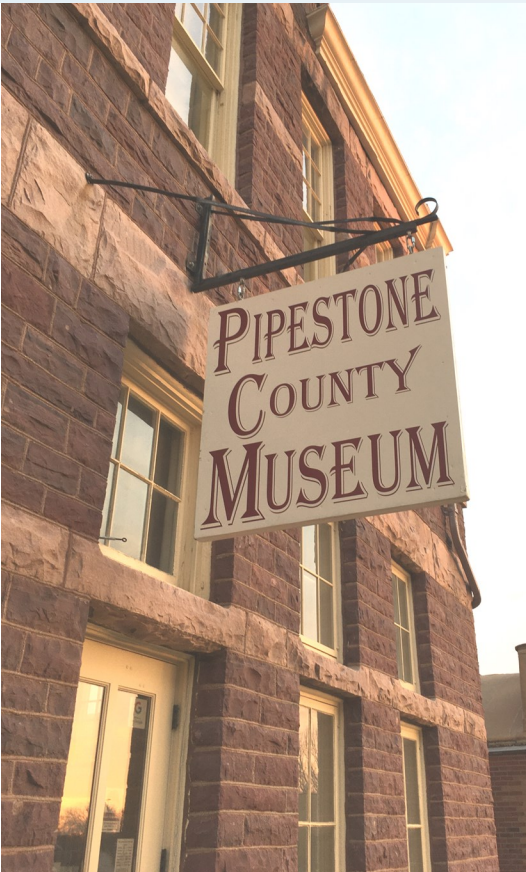
*Quarterly newsletter of the Pipestone County Historical Society*

*Volume XLII, Issue I  
Spring 2024*

## Pipestone County Historical Society Pipestone County Museum

**Pipestone County Museum  
113 South Hiawatha Avenue  
Pipestone, Minnesota 56164**

**pipctymu@iw.net  
507-825-2563  
www.pipestonecountymuseum.com**



Watch on  
the PCHS  
Channel!

## PCHS 2024 Annual Meeting

The 2024 Annual Business Meeting was held on February 24 in the newly remodeled programming space at the Pipestone County Museum. About 25 members attended. Vice-president Gen Lustfield presided over the meeting with the 2023 minutes read by secretary Staci O'Hearn Burmeister and the financial report given by member Shannen Muller in absence of treasurer Chris Hollingsworth. Executive Director Susan Hoskins gave a year-end review of accomplishments and activities, and outlined plans for the coming year. All enjoyed coffee and a light brunch provided by member volunteer Deb Brockberg & Museum Educator Trava Olivier.

### Inside this Issue

Historic Preservation Interest Group.....	2
Museum Education .....	3
New in Collections .....	4
2024 Cemetery Tours .....	5
Railroad Exhibit .....	6
Minnesota Digital Library .....	7
Jasper Area Historical Society and Museum .....	8
District #3 School in Session ...	9



## Historic Preservation Interest Group

May 30, 6:00 p.m.

Historic Preservation Interest  
Informational Session  
Pipestone County Museum



Above: Olive Street [Main] looking east, 1910. Left: Main Street [Olive] looking east, 2023

Pipestone County has an amazing amount of historic properties. Although many have been razed in living memory, those that remain deserve special mention—

and attention! Visitors to Pipestone often comment on the historic main street presence and also several other historic properties throughout the county. Although we may live with this landscape every day, we do well to remember this architectural landscape is unique.

The citizens of Pipestone County have long recognized the importance of the historic preservation of our unique properties. In fact, there are at least five organized groups which prioritize historic preservation in the county! Those include the City of Pipestone's Historic Preservation Commission [HPC], and nonprofits Historic Pipestone Inc. [HPI], The Jasper Area Historical Society and Reclaim Community. The Pipestone County Historical Society's bylaws specifically state as part of our mission..."cooperate with others in protecting and preserving buildings and monuments which reflect our unique community heritage."

If the historic preservation of our local architectural treasures interests you, come to the Pipestone County Museum on Thursday, May 30 at 6pm when Executive Director, Susan Hoskins, will present a slide show on Pipestone's historic main street "Now & Then." Look for more presentations this summer to highlight specific properties, historic districts and to hear from representatives of several local groups dedicated to historic preservation.

In the meanwhile— check out an online tour of Pipestone's Commercial Historic District using the free PocketSights app on your phone or [www.pocketsights.com](http://www.pocketsights.com) and searching for Pipestone!

### 2024 PCHS Board

- Sue Parsley- President
- Gen Lustfield- Vice President
- Staci Burmeister- Secretary
- Chris Hollingsworth- Treasurer
  - Shannen Muller
  - Sirrina Martinez
  - JoLynn Nangle
  - Linda Schulze
  - Open

PCHS Board meets the third Saturday of the month at 9am. If you are interested in serving on the board contact the Museum at 507-825-2563



Check out our  
YouTube page!

Pipestone County  
Museum  
[youtube.com](http://youtube.com)



### Pipestone County Historical Society Membership & Donation Form

#### Annual Membership Categories

- \_\_ Friend \$25-\$49
- \_\_ Supporting \$50-\$99
- \_\_ Century \$100-\$249
- \_\_ Silver \$250-\$499
- \_\_ Gold \$500-\$999
- \_\_ Advocate \$1,000 +

Additional Donation: \_\_\_\_\_ (please fill in amount)

Name: \_\_\_\_\_

Address: \_\_\_\_\_

Email: \_\_\_\_\_

#### Membership Benefits include ...

Free Admission to Exhibit Galleries & Research Archives,  
10% discount at Gift Shop,  
Subscription to the Prairie Traveler newsletter,  
Discounts on Research, Copies & Photo Reprints







## School is in Session!

As the summer of 2024 begins, PCHS is excited to once again be partnering with Mrs. Diane Hansen to offer programming at District #3 Schoolhouse located in Moore Park on North Hiawatha Avenue in Pipestone. Mrs. Hansen has truly turned attending “school” at this historic property into a weekly destination for many children.

There will be a couple of minor changes to this summer’s programming at the schoolhouse, all designed to make the experience at the schoolhouse the best it can possibly be for everyone involved. First, in keeping with the historical context of a country school, the activities are designed for school aged children. As such, school will be open to students who have completed kindergarten and above.

Also new this summer PCHS will need a completed Emergency Contact form for every student who attends.

As the number of attendees has grown over the years, more and more children ride their bike, walk, or are dropped off at the schoolhouse. We want to be prepared, should the need arise, to know whom to contact and how to reach them. Only one form will be needed for the summer, regardless of how many times a child attends. Forms will be available at the schoolhouse and the Pipestone County Museum. A parent or guardian signature is required.

Schoolyard Games will be back for another season from 12:30-1:00 p.m. followed by school being in session from 1-3 p.m. beginning June 6<sup>th</sup> and continuing through August 29<sup>th</sup> with the exception of July 4<sup>th</sup> when the school will be closed in observance of the holiday.



### School Age Kids!

Have some fun this summer with fun activities at Moore Park with games & activities and experience a real country schoolhouse.

Open the third Thursday beginning June 6 and continuing through August 29. No school on July 4th!

**District #3 Schoolhouse**  
**Open Thursdays 1-3pm**  
**June, July, August**  
**With Mrs. Diane Hansen,**  
**Teacher!**



**Schoolyard Games**  
**Thursdays 12:30– 1:00pm**  
**June, July, August**  
**With Trava Olivier,**  
**Museum Educator!**

Don’t forget to fill out the Emergency Contact for everyone’s safety!

## Collaboration is the Key.....by Trava Olivier

The Oxford English Dictionary defines collaboration as the action of working with someone to create something. Tons of collaborations take place at the Museum on a daily basis. As a small staff, we all have to step up and step in where needed, regardless of whose department it is.

Behind the scenes in the education department, more great collaboration has been taking place. The Pipestone County Historical Society, through our research library, became a member of the Prairielands Library Exchange. This membership had led to collaboration between Meinders Community Library of Pipestone, the Pipestone Area Middle/High School, and our organization. The group meets monthly to share ideas and suggest resources to assist in implementing those ideas.

It was through this group’s collaborative efforts we were able to write and receive a Better Together collaboration grant in the amount of \$1500. This award was used to bring Minnesota Historian, Arn Kind, to Pipestone for two presentations on the Minnesota Fur Trade. The first presentation took place during the school day and included over 400 students from three school districts across Pipestone County! The evening performance drew an additional 45 guests. Much thanks to Prairieland Library Exchange for the generous support to make the event possible and to Jody Wacker and Emily Blaeser of Meinders Community Library, and Lori Gunnick the Pipestone Area Schools Librarian for being great partners.

I am happy to share that this is just one of three grants the Pipestone County Historical Society has received from the Prairielands Library Exchange to date. We

have received two additional grants awarded to PCHS, separate from the library collaboration.

First, we received an Innovative Marketing Grant which allowed for the development of a Portable Map Kit that can be utilized by educators across Pipestone County to supplement lessons in several areas including geography, agriculture, ecology and more. Second, we were awarded an Accessibility Grant that is currently allowing for Museum Gallery Guide brochures to be professionally designed and printed in both English and Spanish, as well as implementing bilingual signage in our exhibit spaces to direct traffic flow through the Museum. Visitors to the Museum will get to see these changes in the coming weeks.



*Historian Arn Kind's presentation on the MN Fur Trade, March 11.*





## Collections Spotlight

Panama-Pacific International Exposition coin purse compliments of Jerry Hines.



The Panama-Pacific International Exposition was a world's fair held from February 20 to December 4, 1915, in San Francisco, CA. Celebrating the completion of the Panama Canal, the fair included a steam locomotive, a telephone line to New York City, and a visit from the Liberty Bell.

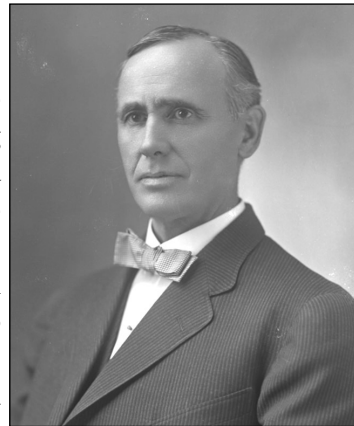
The premium came from pool hall owner Jerry Hines. He operated Jerry Hines Pool and Billiards at 119 West Main in Pipestone in the 1910s.



## New in Collections.....by Noah Burris

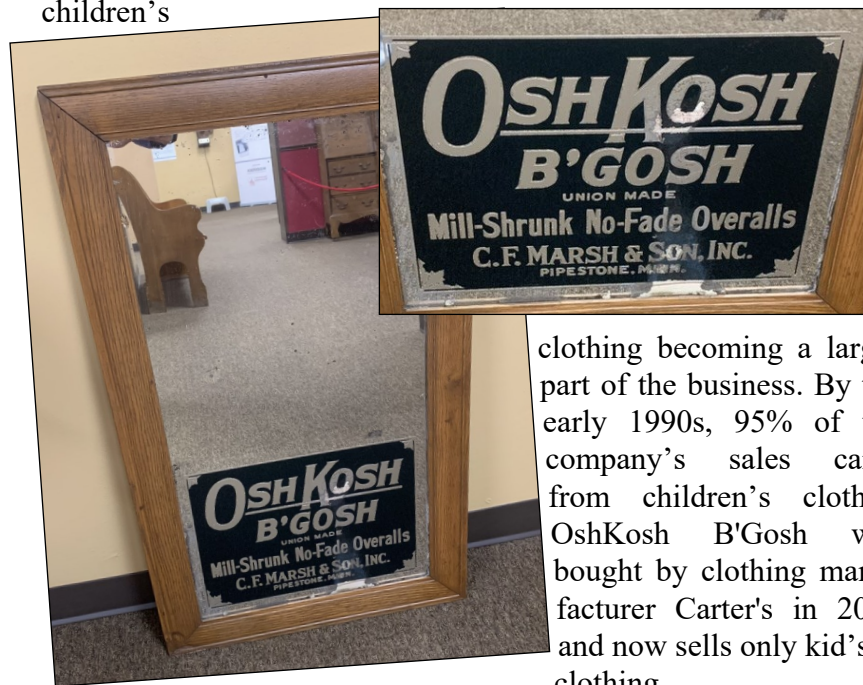
The Collections Committee has met twice this year to consider potential new items for the collection. They reviewed 23 items from 6 donors at the January meeting and 69 items from 13 donors at the March meeting. 23 items have been accepted and added to the collection so far this year.

One of those new items is a mirror advertising both OshKosh B'Gosh clothing and the C.F. Marsh & Son clothing store. C.F. Marsh originally operated the C.O.D. Clothing House in Pipestone beginning in the late 1880s. Marsh moved his store to 109 W. Main in 1911 and later changed the name to C.F. Marsh & Son Clothing. The store was later owned and operated by David Spark and then his son Charles Spark.



C.F. Marsh from the Museum's Chesley glass plate negative collection

OshKosh B'Gosh was founded in 1895 as the Grove Manufacturing Company in Oshkosh, WI. They originally produced overalls for farmers and railroad workers. The name OshKosh B'Gosh was first used in 1911 after William Pollock, the manager of what was then called the OshKosh Overall Company, heard it at a New York vaudeville show. The name OshKosh B'Gosh was formally adopted in 1937. They continued producing overalls and other clothes over the decades with children's



clothing becoming a larger part of the business. By the early 1990s, 95% of the company's sales came from children's clothes. OshKosh B'Gosh was bought by clothing manufacturer Carter's in 2005 and now sells only kid's clothing.

## The Oliver No. 5

The Oliver Typewriter Company operated 1895-1928. Founded by Thomas Oliver, the No. 5 model (pictured in the PCHS Collection), was the last offering from company namesake before his death. The No. 5 has a bat-wing design that results in an innovative 'visible text.' This means the typist could actually read the print as it was being typed. Previous models (of all brands) featured 'hidden text,' in which the print was not visible until the typist scrolled the paper up. The Oliver No. 5 was manufactured between 1907-1914.

According to the 'Made in Chicago' Museum's website, this model was intended for home use and would have cost about \$100— and that is about \$3,000 in 2024. Goes to show what an important tool typewriters were, a comparable investment to some of our 'can't live without' technology today!



## Membership Renewals

March 2024

### Business Backer

Liberty Pawn Coin & Antiques— Pipestone

### Century

Nancy Thompson— Brookings, SD

Gary Gillin— Pipestone

Brad & Cathie Burris— Pipestone

### Supporting

Faith Sullivan— Minneapolis, MN

Marjorie & Jerry Pankonen— Pipestone

Gordon Huebner— Pipestone

### Friend

Valerie Mollema— Woodstock

Donald Cleppe— Santa Rosa, CA

Steve & Bev Spark— Stillwater, MN

Leland & Marcia VanderPoel— Fresno, CA

Jeff & Deb Brockberg— Pipestone

Larry & Suzanne Fuller— Sioux Falls, SD

## 2024 LADIES TEA



SATURDAY  
MAY 11, 2024



11:00 AM

FERRIS GRAND LODGE ROOM  
106 EAST MAIN STREET- UPSTAIRS

\$25

## Donations March 2024

PCHS relies on the generosity of our members not only to meet the general budget but also to maintain our five historic properties and to accomplish special projects.

Thank You.

### General Fund Donations

Deborah Galleher, Judy Oldemeyer,  
Christine & Ray Burch, Carla Barkley

### Building Fund Donations

Gay (Drury) Murphy



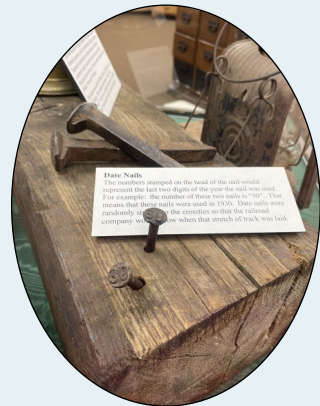
## Exhibit Spotlight

### Date Nails

The number stamped on the head of the nail would represent the last two digits of the year the nail was used.



For example: the number on these two nails is '30' which indicates the nails were used in 1930.



Date nails were randomly struck into cross-ties so that the railroad company would know when that section of track was laid.

## Railroads Battle for Pipestone

*This article originally ran in the 1990 "Rails Across the Prairie" issue of the Coteau Heritage, a journal of the Pipestone County Historical Society.*

One event of ineptest that happened in Pipestone in 1884 was a small battle that raged between the Burlington and Omaha railway companies. Two companies reached the village of Pipestone at almost the same time.

The law stated that when one railroad crossed another, they had to build the crossing and maintain it for all time. But the law said nothing about when they met at almost the same time.

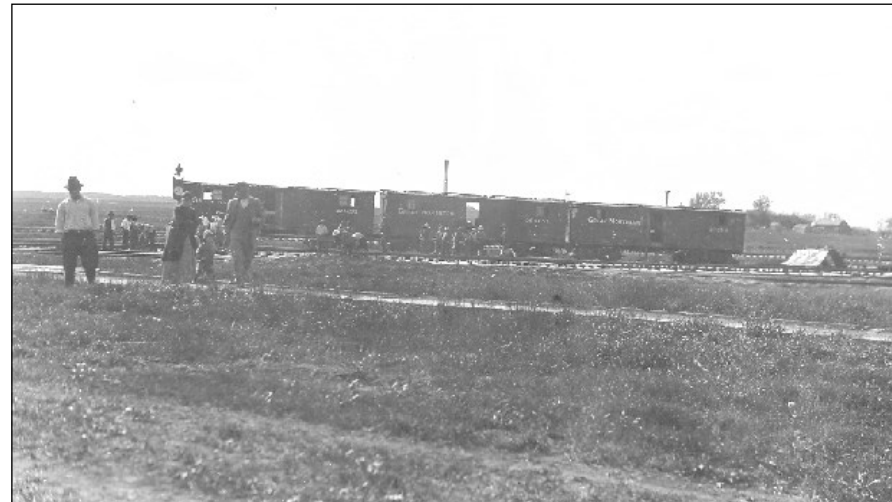
The Burlington laid the track where the crossing would take place before the line they had built went that far. The Omaha reached the spot first with their line and ripped up the track that the Burlington had laid down. They then parked a loaded freight train at the point of crossing.

When the Burlington workers reached the point of crossing with their track, they too ran a loaded freight train up to the point.

All this did not delay the track building because the workers continued laying the track beyond the disputed point.

The problem was solved at a conference between the two companies. The Omaha had possession and had an injunction on the Burlington.

The Burlington ultimately agreed to construct a permanent crossing over the Omaha line.



*Scene near the contested spot in 1884.*

## Summer 2024 Cemetery Tour Schedule

PCHS is once again offering educational cemetery tours throughout the county this summer. Tickets are \$5.00 per participant (\$3.00 for members of PCHS.) Participants should be aware that these walking tours are often led off paved surfaces and do include portions of uneven ground. All tours are conducted in a respectful manner and include educational topics such as cemetery symbolism, general biographies and veteran service.

**June 8: 2:00 p.m.**

**St. Joseph Cemetery**

Location: 146 MN Hwy 269

From Jasper: Drive west on Hwy 269/Wall St.

Drive west for 1.5 miles to destination.



**July 13: 2:00 p.m.**

**Peace Lutheran Cemetery**

Location: 1862 221st Street

From Ruthton: Drive south on MN Hwy 23 to 221<sup>st</sup>

St., turn east to destination.



**August 10: 2:00 p.m.**

**Prairie Lawn Cemetery**

Location: 1650 60th Ave.

From Pipestone: Drive north on Hwy 75, turn west onto County Road 7/151<sup>st</sup> St., turn north onto 60<sup>th</sup> Ave., drive 1.5 miles to destination. (This cemetery is located in the middle of a section.)



**September 14: 2:00 p.m.**

**St. Leo Cemetery**

Location: 656 116th Street

From Dar's Pizza in Pipestone: Follow 8<sup>th</sup> Ave. north through Pipestone and around curve, turn north onto 121<sup>st</sup> St., turn west on 116th St. to destination.



## All Aboard! Railroad Exhibit .....by Noah Burris

The Railroad's Mark on Pipestone County exhibit was reimagined after the Museum's first-floor renovation in 2023. It was redesigned and new informational panels were added. The panels provide a look at the many different railroad companies and railways that were laid throughout the county, and the role they played in the founding and growth of many Pipestone County towns.



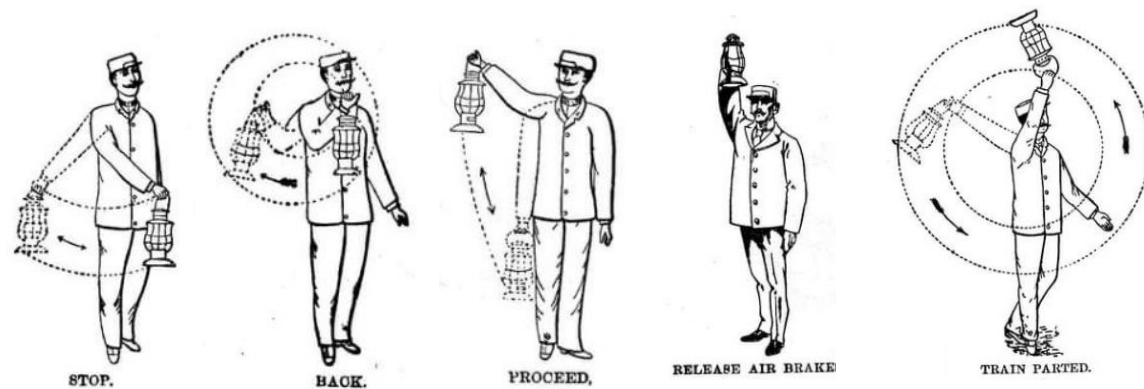
The focal point of the exhibit is the hand-pulled cargo cart loaded with luggage and cream cans. The cart was used at the Rock Island Depot in Pipestone. The original paint on the side of the bed still reads "Railway Express Agency."

### **What was the Railway Express Agency?**

Express service (prompt movement of freight at higher rates) began in 1839 with regular trips between New York City & Boston, and flourished in the late 1800s. By 1900 there were more than four major express companies, and business continued to grow. During WWI, the United States Railway Administration took over supervising the nation's railroads, and the four principal express companies were consolidated as American Railway Express, Inc. In 1929 the assets of the company were transferred to Railway Express Agency. The company was owned by 86 railroads in proportion to the express traffic on their lines; no one railroad had control of the agency. The Railway Express Agency closed in 1975.

Also on exhibit are multiple smaller railroad-related objects to view, including examples of the different types of railroad lanterns.

**Tubular "Barn Style" Lantern:** Although frequently misidentified as railroad lanterns. The vast majority of tubular lanterns were used for general domestic purposes. That being



## Jasper Area Historical Society.....by Briana Conrad

In April, JAHS completed its Conditions Assessment Report on the Poorbaugh Building, home of the Jasper Museum. The report has given us some valuable information about the physical condition of the building, and provides recommendations on how to prioritize future projects. The funds for this report came from a Minnesota Historical & Cultural Heritage Grant and were awarded by the Minnesota Historical Society. The report is available to the public, and can be viewed at the Jasper Museum.



*Poorbaugh Building*

Following the architects' recommendations in the report, we plan to apply for a grant to help us pay for repointing and masonry work on the south (front) side of the building. At this time we will request the funds to reconstruct the storefront to more closely match its original design. Our ultimate goal is to restore the entire Poorbaugh Block to its best possible condition so that it can serve our patrons for the long term. We greatly appreciate any financial support and/or volunteer hours as the project moves forward.

The Jasper Museum is open by appointment for groups or individuals who wish to see our collection or conduct research, and annually during Jasper Quartsziter Days (this year that is Saturday, July 20, 2024 from 11 am to 2 pm).

We welcome our community's continued support to maintain our buildings and exhibits. Your donations are tax deductible and can be mailed to: Jasper Area Historical Society, PO Box 156, Jasper, MN 56144.



*"Farmers State Bank Corner, Jasper, Minn."  
now People's Bank at the SE corner of Wall Street and South Burr Avenue.*



## PCHS at the MN Digital Library

The Pipestone County Museum first began working with the Minnesota Digital Library in 2005 beginning with a portion of the photograph collection.



That project led to a more focused project involving the Pipestone Indian School photograph collection



As well as the Close Brothers Land Record collection



MDL provides a platform for the collection of the Pipestone County Historical Society to be shared more broadly than would otherwise be possible

Pipestone County  
Historical Society  
113 South Hiawatha  
Pipestone, MN 56104



MINNESOTA  
DIGITAL LIBRARY  
mndigital.org

## Explore Pipestone County History Online

.....by Stephanie Hess, MDL Digital Curator

The Minnesota Digital Library (MDL) contains digitized content from Minnesota's cultural heritage organizations in a single website. Over 200 participating organizations, including the Pipestone County Historical Society, have contributed photographs, documents, maps, recordings, and more to its free searchable online database.

To get started, visit MDL's website at [mndigital.org](http://mndigital.org). You can browse or search through more than 59,000 items on the website. You can also simply view the PCHS digital collection by using the "Browse by Contributor" button on the homepage.

Here are some highlights from Pipestone County to explore:

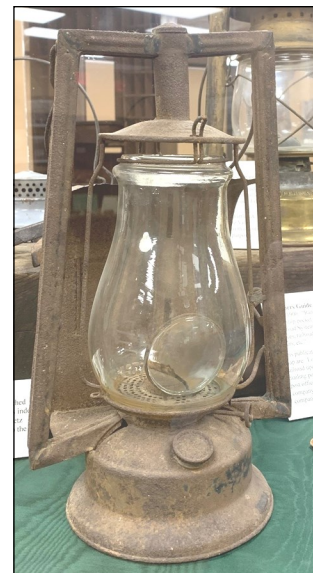
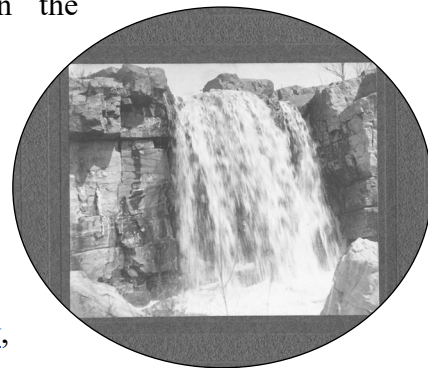
- ◆ [Postcards](#) from locations around Pipestone County. Some have handwritten notes on the back.
- ◆ Images of buildings and businesses in [Pipestone](#), [Ihlen](#), [Cazenovia](#), [Edgerton](#), [Jasper](#), [Trosky](#), [Holland](#), and more.
- ◆ Landscape views of [rock formations](#), [quarries](#), and [Winnewissa Falls](#).
- ◆ [Pipestone Indian Training School](#) pictures of students, classrooms, and campus.
- ◆ [Land contracts for acreage](#) in southwestern Minnesota from Close Brothers & Company

Additionally, MDL staff have curated online resources for students, teachers, and the public to use. These [primary source sets](#), [maps](#), [timelines](#), and [online exhibits](#) provide the stories behind historic materials from contributors across the state. One of our maps focuses on [Landmarks in Southwest Minnesota](#), which we developed with help from attendees of last year's regional meeting held in Pipestone.



Mrs. Ted Green & Mrs. Bailey inside  
Ihlen's Uptown Café.

The Minnesota Digital Library is pleased to offer access to these wonderful examples of local history. We hope you enjoy digging deeper into the past through this website!



said some railroads did use them.

**Tubular Railroad Lantern (left):** When used by railroads, these lanterns often had railroad company markings included on them. The one on exhibit has the Pennsylvania Railroad Company emblem etched onto the glass globe and includes a bullseye magnifier.

**Short-Globe Railroad Lantern (right):** These lanterns are smaller and became widely used after World War I. Railroads switched to kerosene lantern fuel after the war and the smaller burning chamber of the shorter

globe was especially suited for this. They were also lighter weight and more portable.

**Red Lantern Globes (below):** Colored globes were particularly useful for signaling at night and used like a traffic signal to communicate and warn of hazards. The exhibit features a red-colored globe and a two-tone red and clear globe.



**Inspector's Lantern (below):** These lanterns were plain and utilitarian in design. They were generally large and bulky. The weight and portability were not central concerns as with other types of railroad lanterns.



This exhibit, like many of the others, also features a hands-on interactive. Grab a battery-operated lantern and practice some railroad signals like reduce speed, stop, and proceed.

This exhibit was reimagined from a previous railroad exhibit during the renovation of the Museum's first floor. It is now on display in Gallery I.



## The Roe House .....by Bill Morgan

In 1914, Ethel and Jack Roe— owners of Roe’s Trading Post— built a stunning California Craftsman bungalow at 911 3rd Avenue S.W. Inspired by similar Craftsman style homes, the Roe House contains Craftsman features such as a Japanese-inspired roofline, fieldstone piers, stuccoed white-painted walls, and floor-to-ceiling windows that tie the interior to the natural landscape. In the west-facing living room stands a rough-faced brick fireplace flanked by stained glass windows. Because the eaves are spread out like airplane wings, this style of house often carries the label “Airplane Bungalow.” No other house in Pipestone— let alone the state of Minnesota— quite captures the spirit of a California Craftsman bungalow as does this unique masterpiece.



I have been unable to locate a name of an architect for the Roe House. Given their range of talents and skills it is reasonable to believe that Ethel and Jack designed the house themselves. Between 1900 and 1940, house plans were

readily available in books, magazines, catalogues and architectural journals—resources the Roes might well have made use of. During this same period, mail-order companies like Sears & Roebuck and Montgomery Ward were manufacturing prefabricated structures to be purchased by mail and shipped to buyers by rail. In 1911, a California company advertised a pre-cut, factory-made Craftsman bungalow similar to the Roe House that was available for \$4,000.



Ethel Roe died in 1961; son John in 1978. Before John died he sold the Roe collection to a local businessman for \$50,000. For a short time the artifacts were displayed in a Native American inspired building near the corner of Highways 75 and 23. At one time, the Minnesota State Legislature— with the support of the Minnesota Historical Society— had agreed to purchase the Roe collection and display it in Pipestone if the town would build a suitable building. After negotiations between the owner and legislature broke down the owner sold the collection to a company in Alberta, Canada, where, it is believed, the priceless artifacts remain in storage.

*This article first ran in the Winter 2014-2015 issue of the ‘Prairie Traveler.’*

## From the Star Photo Collection



*Motor had to be used to lift the bell from its former location. Standing directly under the historic bell is the Rev. John W. Cowles, pastor of the church. Next to him is Ed Even, a trustee of the church and long time church member.*

The above is from the 14 May 1959 issue of the Pipestone County Star newspaper. The photograph ran on page one with an information caption. However, the newspaper took more than one photograph that day and although only one was printed, the others were saved.



*A memento from the early days of the First Baptist church will remind worshippers at the new church of their forefathers. A bell, which was installed in the old church in 1887, was transferred last Wednesday to the new church located at Sixth Ave. SW and Second Street. In the early days of Pipestone’s existence, the bell was used to sound fire alarms as no other fire alarm system was available. The bell weighs some 1000 pounds, and a boom from Hicks*

## Church Records

PCHS holds a variety of church records in the archives which are available for research.

Besides various photographs of church buildings, congregations and happenings



*First Methodist Church in Pipestone: NW corner of 3rd Ave & 3rd St. SE.*

Several churches have published directories which review their congregations’ history and sometimes include family portraits



As well as general membership lists, newspaper clippings, entries in local history books and other miscellaneous records.